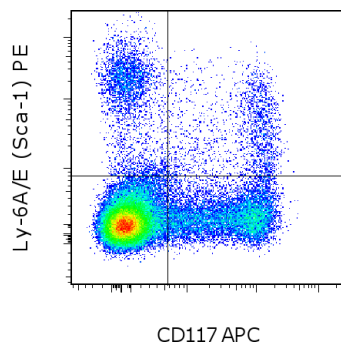


Anti-Mouse Ly-6A/E (Sca-1) PE

Catalog Number: 12-5981

RUO: For Research Use Only. Not for use in diagnostic procedures.



Staining of C57Bl/6 bone marrow cells with Mouse Hematopoietic Lineage Cocktail eFluor® 450 (cat. 88-7772), Anti-Mouse CD117 (c-Kit) APC (cat. 17-1171), and 0.125 ug of Anti-Mouse Ly-6A/E (Sca-1) PE. Lineage negative/low, viable cells, as determined by 7-AAD (cat. 00-6993), were used for analysis.

Product Information

Contents: Anti-Mouse Ly-6A/E (Sca-1) PE
Catalog Number: 12-5981
Clone: D7
Concentration: 0.2 mg/mL
Host/Isotype: Rat IgG2a, kappa

Formulation: aqueous buffer, 0.09% sodium azide, may contain carrier protein/stabilizer
Temperature Limitation: Store at 2-8°C. Do not freeze. Light sensitive material.
Batch Code: Refer to vial
Use By: Refer to vial
Caution, contains Azide



Description

The D7 monoclonal antibody reacts with mouse Sca-1, an 18 kDa member of the Ly-6 family of GPI-linked surface proteins. D7 reacts with both Ly-6E.1 and Ly-6A.2 molecules expressed by mouse hematopoietic stem cells, myeloid population and peripheral T and B cells. Non-activated splenocytes from Ly-6.2 strains including C57BL, SJL, 129, AKR, and others demonstrate higher frequency of D7-positive cells compared to the Ly-6.1 strains such as BALB/c, C3H, NZB and others. Sca-1 is expressed at high levels upon activation regardless of the Ly-6 haplotype. The Ly-6 family is involved in regulation and function of T cell activation. Sca-1 is a major phenotypic marker for mouse hematopoietic progenitor/stem cell subset.

Applications Reported

This D7 antibody has been reported for use in flow cytometric analysis.

Applications Tested

This D7 antibody has been tested by flow cytometric analysis of mouse bone marrow cells. This can be used at less than or equal to 0.25 µg per test. A test is defined as the amount (µg) of antibody that will stain a cell sample in a final volume of 100 µL. Cell number should be determined empirically but can range from 10⁵ to 10⁸ cells/test. It is recommended that the antibody be carefully titrated for optimal performance in the assay of interest.

References

Ortega, G., P. E. Kory, et al. (1986). Role of Ly-6 in lymphocyte activation. I. Characterization of a monoclonal antibody to a nonpolymorphic Ly-6 specificity. J Immunol 137(10): 3240-6.

Malek, T. R., G. Ortega, et al. (1986). Role of Ly-6 in lymphocyte activation. II. Induction of T cell activation by monoclonal anti-Ly-6 antibodies. J Exp Med 164(3): 709-22.

Related Products

00-6993 7-AAD Viability Staining Solution
12-4321 Rat IgG2a K Isotype Control PE (eBR2a)
17-1171 Anti-Mouse CD117 (c-Kit) APC (2B8)

Not for further distribution without written consent.

Copyright © 2000-2012 eBioscience, Inc.

Tel: 888.999.1371 or 858.642.2058 • Fax: 858.642.2046 • www.ebioscience.com •
info@ebioscience.com

Anti-Mouse Ly-6A/E (Sca-1) PE

Catalog Number: 12-5981

RUO: For Research Use Only. Not for use in diagnostic procedures.

88-7772 Mouse Hematopoietic Lineage eFluor® 450 Cocktail (17A2, RA3-6B2, M1/70, TER-119, RB6-8C5)

Not for further distribution without written consent.

Copyright © 2000-2012 eBioscience, Inc.

Tel: 888.999.1371 or 858.642.2058 • Fax: 858.642.2046 • www.ebioscience.com •
info@ebioscience.com